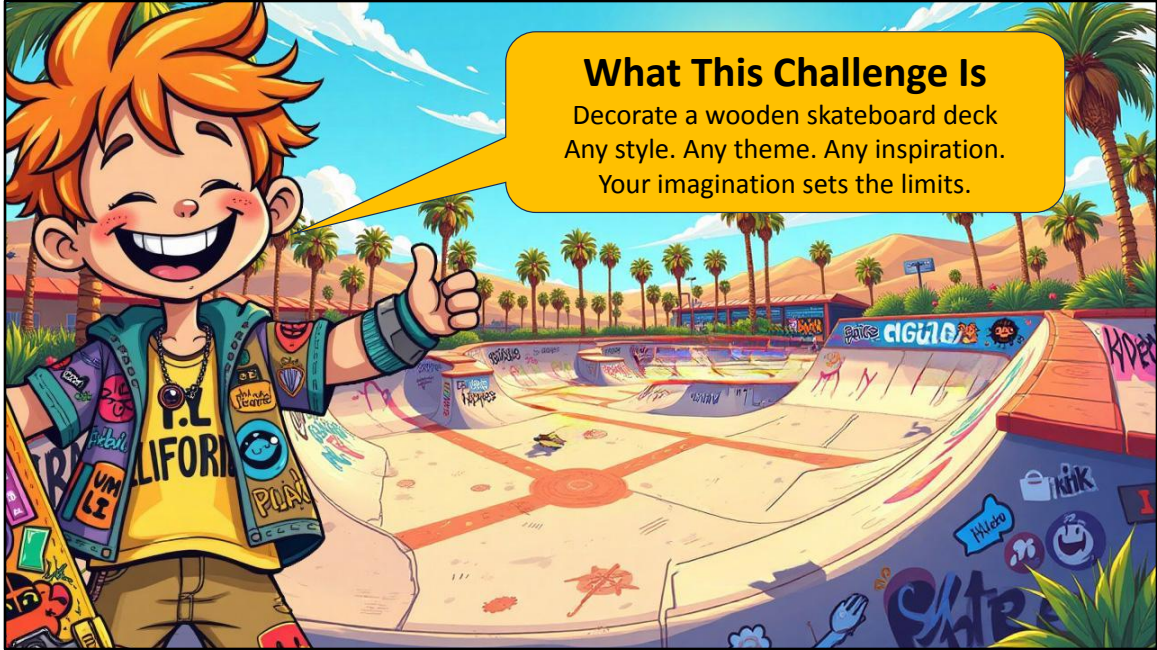


“Welcome to the Make-A-Deck Challenge. This is one of our Bring-It events where you create your design at home or in the classroom, then bring your finished art piece to the festival. This challenge is all about imagination and making something that reflects your own style.”



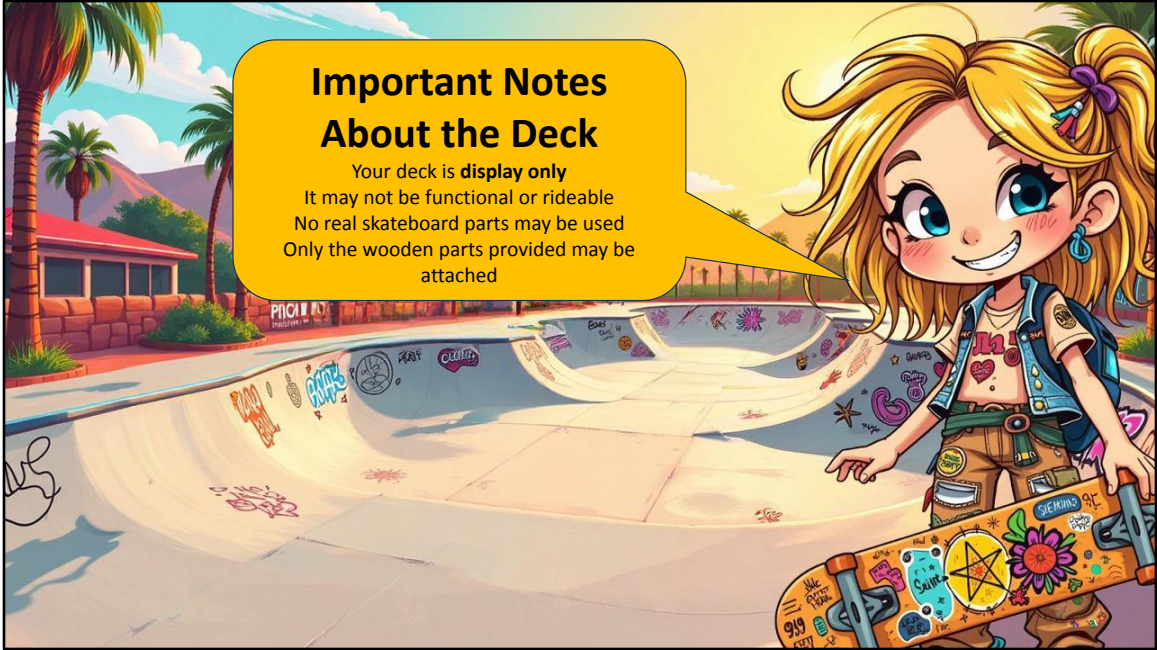
“In this challenge you’ll turn a wooden skateboard deck into a piece of art. You can choose any style, any theme, or any idea you want. There are no directions and no examples. Your imagination is the only limit.”



“You can work alone or with up to two teammates. Everything you make must be created by you or your team. Adults can cheer you on, but they cannot design, build, or decorate any part of your board. This is your project.”



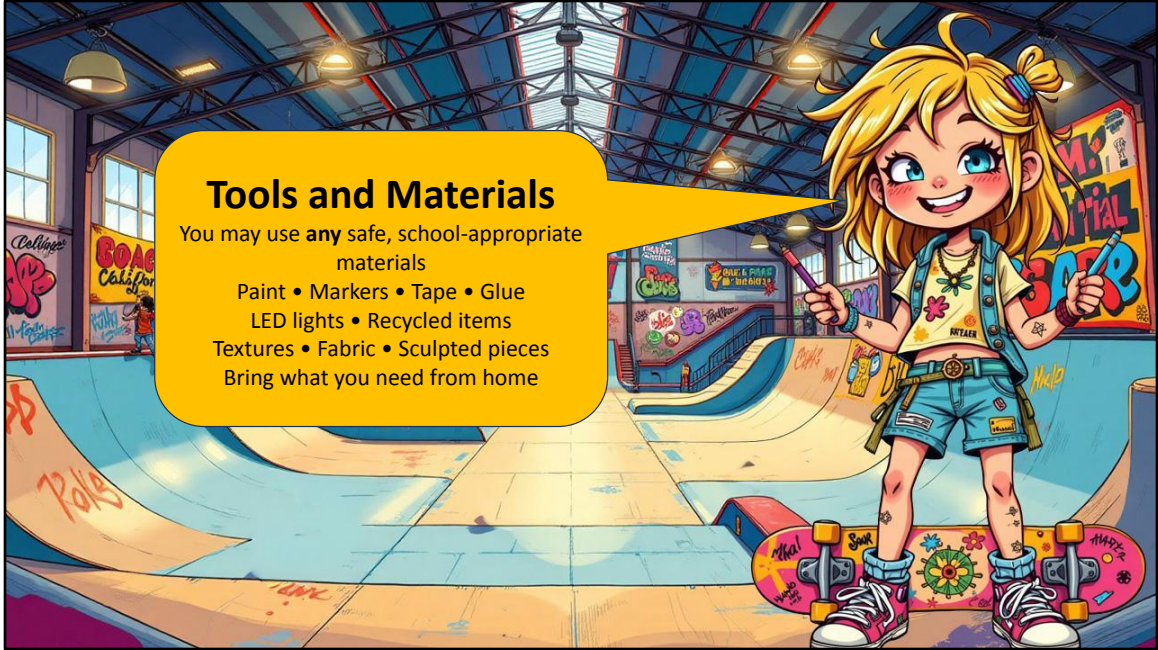
“You will receive a wooden deck, wooden trucks, and wooden wheels. These pieces need to be included in your final artwork in some way.”



“This board is for display only. It cannot be made rideable, and you may not use any real skateboard parts. Only the wooden pieces you are given can be attached.”



“You are free to be bold and original. You can paint, add lights, build textures, or create something completely unexpected. We want to see ideas we’ve never seen before.”



Tools and Materials

You may use **any** safe, school-appropriate materials

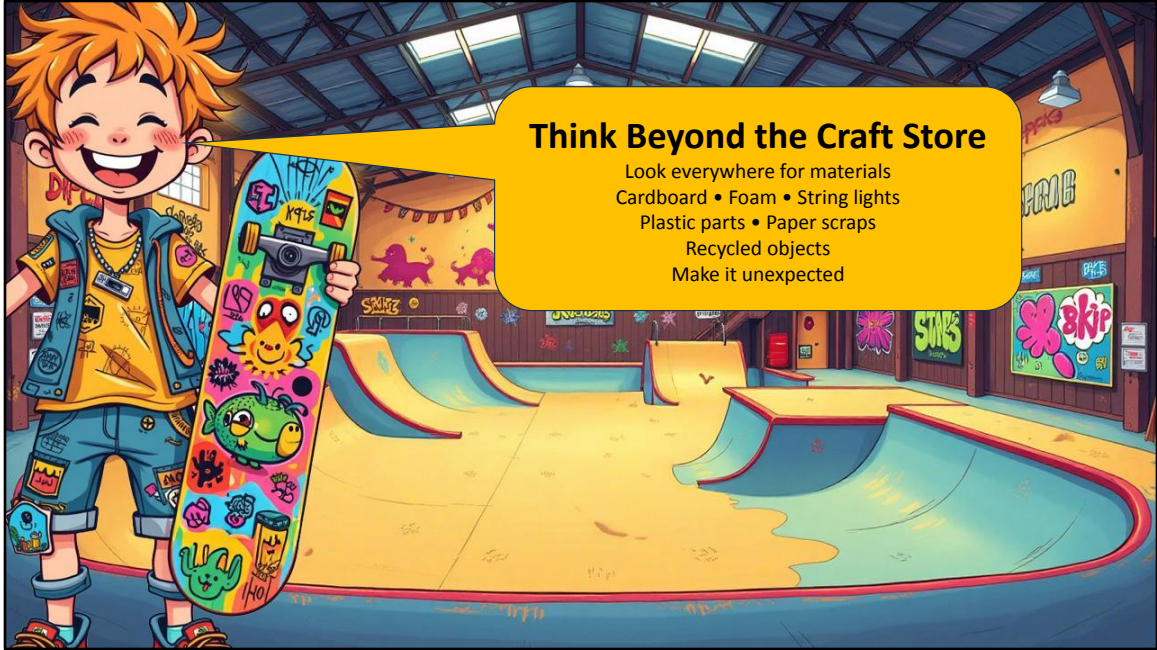
Paint • Markers • Tape • Glue

LED lights • Recycled items

Textures • Fabric • Sculpted pieces

Bring what you need from home

“You can use any materials that are safe and school-appropriate. Paint, markers, tape, lights, fabric, recycled items — whatever fits your idea. Bring the materials you want to use.”



Think Beyond the Craft Store

Look everywhere for materials
Cardboard • Foam • String lights
Plastic parts • Paper scraps
Recycled objects
Make it unexpected

“You don’t have to limit yourself to art supplies. Look around your home or classroom for interesting materials. Recycled objects often make the most creative designs.”

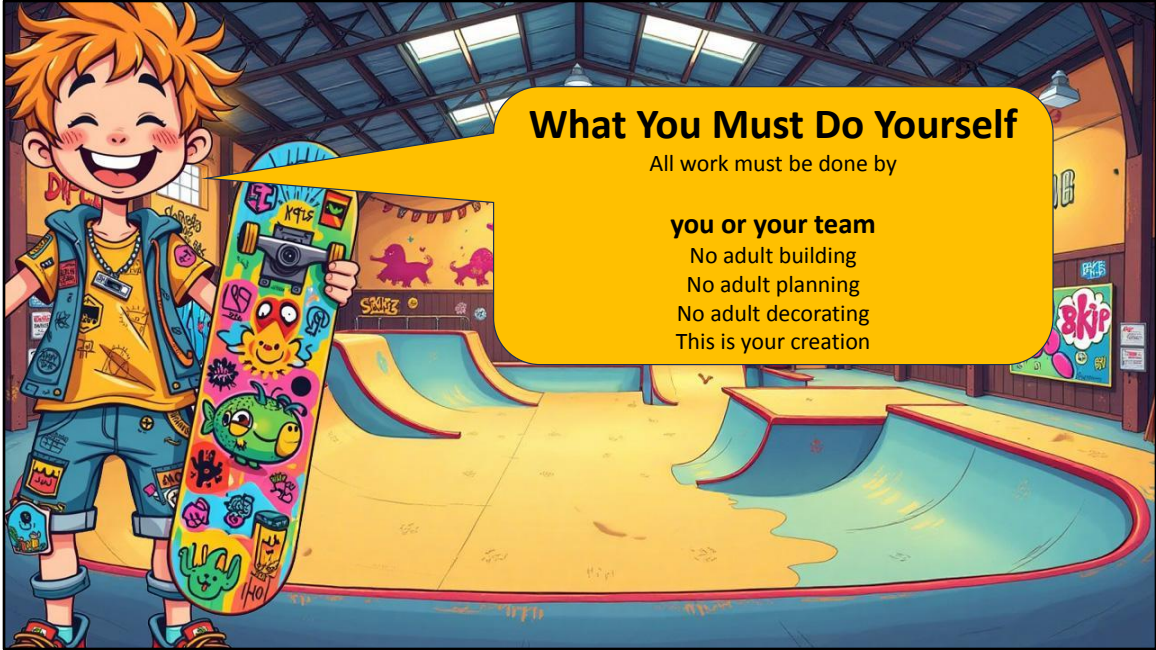


Safety & Appropriateness

Your deck must be:

- Safe to handle
 - Sturdy
 - Mess-free
- Comfortable to display
- School appropriate

“Your finished deck needs to be safe to handle, sturdy enough to display, and something that fits normal school guidelines.”



What You Must Do Yourself

All work must be done by

you or your team

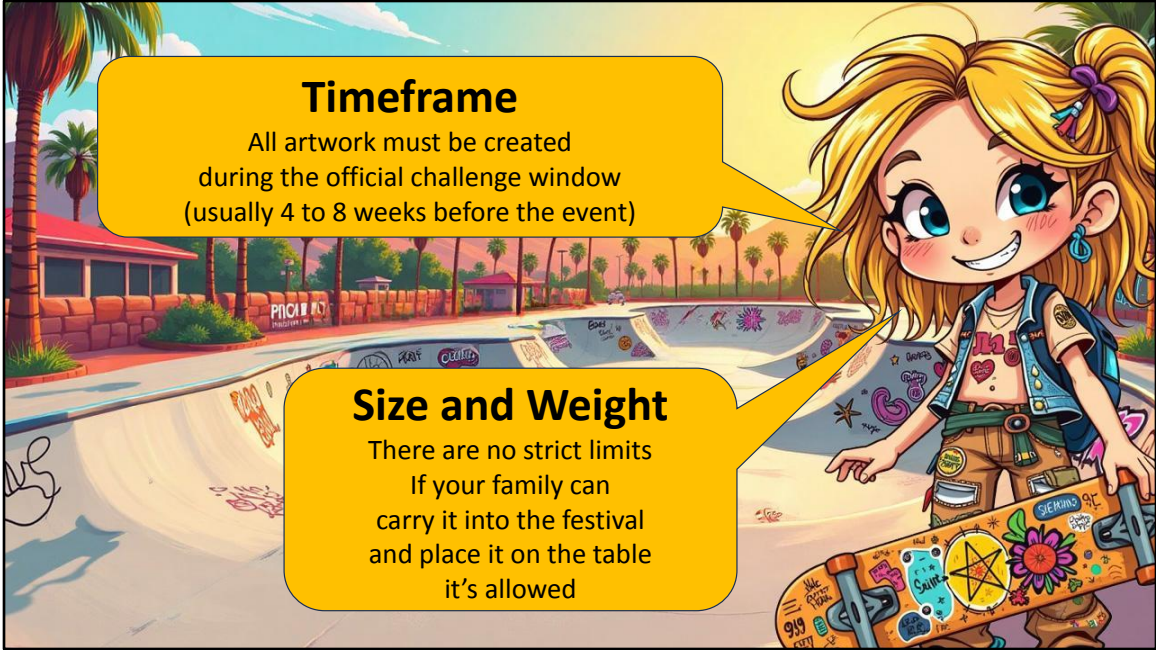
No adult building

No adult planning

No adult decorating

This is your creation

“All of the work must be done by you or your teammates. Adults cannot help design or build your project. This is your creation from start to finish.”



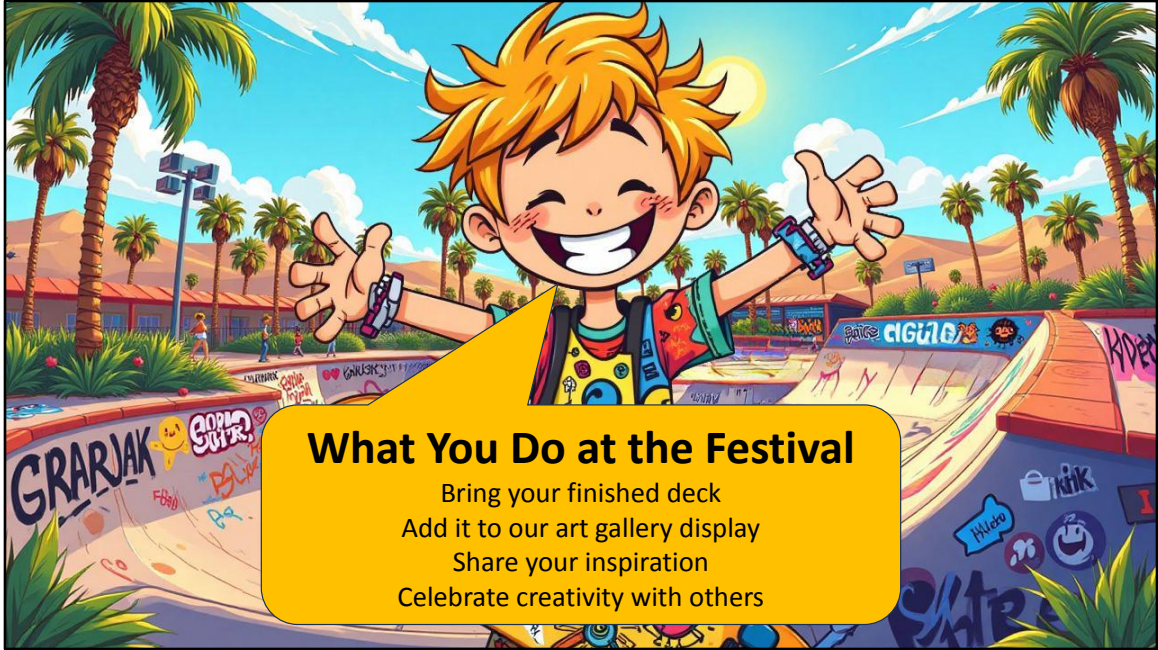
Timeframe

All artwork must be created during the official challenge window (usually 4 to 8 weeks before the event)

Size and Weight

There are no strict limits
If your family can carry it into the festival and place it on the table it's allowed

“You must complete your artwork during the official challenge window. Everything should be created within those weeks leading up to the festival.”
There are no strict size or weight limits. If your family can bring it into the festival and place it on the display table without help, it's allowed.”



What You Do at the Festival

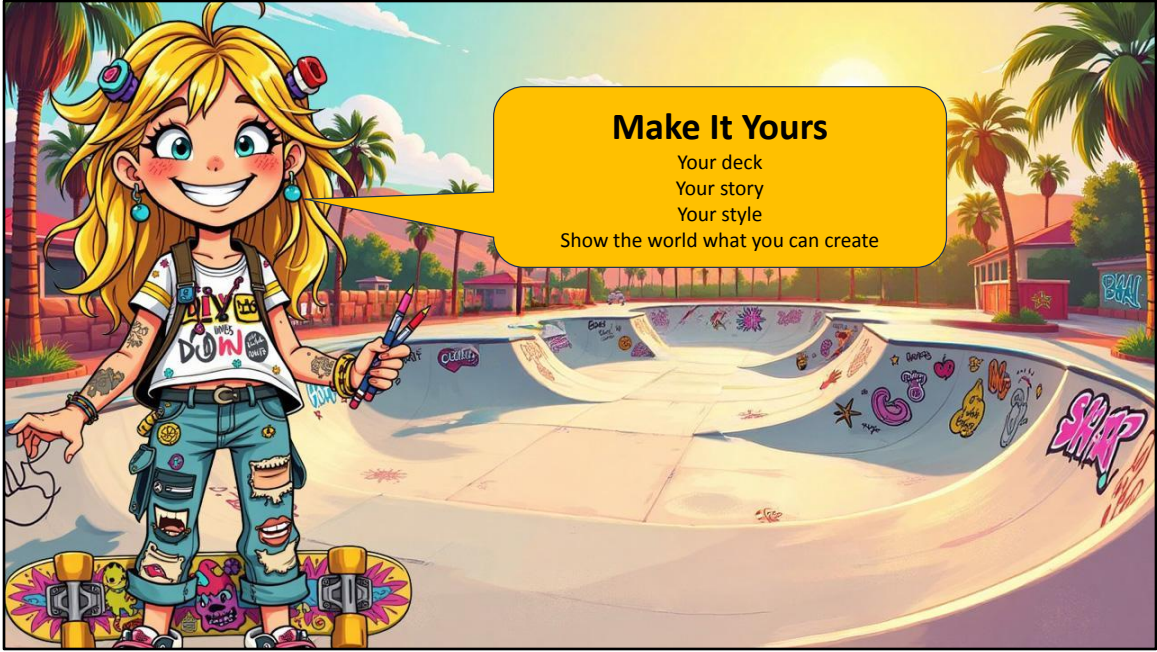
Bring your finished deck
Add it to our art gallery display
Share your inspiration
Celebrate creativity with others

“When you arrive at the festival, you’ll bring your finished deck to our art gallery area. You can share what inspired your design and enjoy seeing what other students created.”



“Everything you attach needs to stay attached. Your board should be safe to touch and follow school guidelines. And remember, the whole project must be your own work.”

“Start dreaming now. You can sketch ideas, collect materials, or just begin experimenting. Let your imagination lead the way.”



“This is your story and your style. Create something that feels like you.”

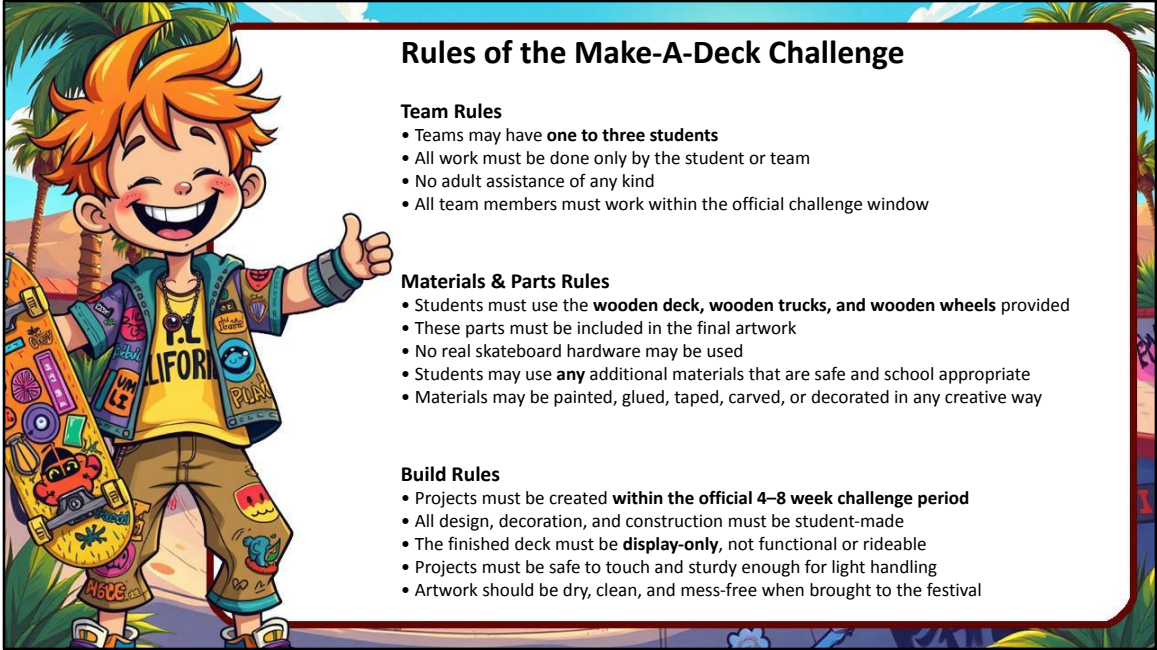


Why We Have Rules

- To keep everyone safe
- To keep the challenge fair
- To help every team be successful
- To make sure the event runs smoothly

We have a set of rules for this challenge, and they exist for good reasons. Our first priority is always safety. We want every student to feel comfortable, confident, and protected while they create. The rules also help us keep the challenge fair. When every team works with the same tools and the same shared pile of materials, it becomes about creativity and teamwork, not about who brought the fanciest supplies.

These guidelines also help the event run smoothly. They make sure everyone knows what to expect, how to move around the space, and how to use the materials responsibly. And most importantly, our rules help build a welcoming environment where every student can have fun, try new ideas, and feel proud of what their team creates.



Rules of the Make-A-Deck Challenge

Team Rules

- Teams may have **one to three students**
- All work must be done only by the student or team
- No adult assistance of any kind
- All team members must work within the official challenge window

Materials & Parts Rules

- Students must use the **wooden deck, wooden trucks, and wooden wheels** provided
- These parts must be included in the final artwork
- No real skateboard hardware may be used
- Students may use **any** additional materials that are safe and school appropriate
- Materials may be painted, glued, taped, carved, or decorated in any creative way

Build Rules

- Projects must be created **within the official 4–8 week challenge period**
- All design, decoration, and construction must be student-made
- The finished deck must be **display-only**, not functional or rideable
- Projects must be safe to touch and sturdy enough for light handling
- Artwork should be dry, clean, and mess-free when brought to the festival

Rules of the Make-A-Deck Challenge

Size & Weight Rules

- There are no strict size or weight limits
- If your family can carry it into the festival and place it on the display table without help, it is allowed

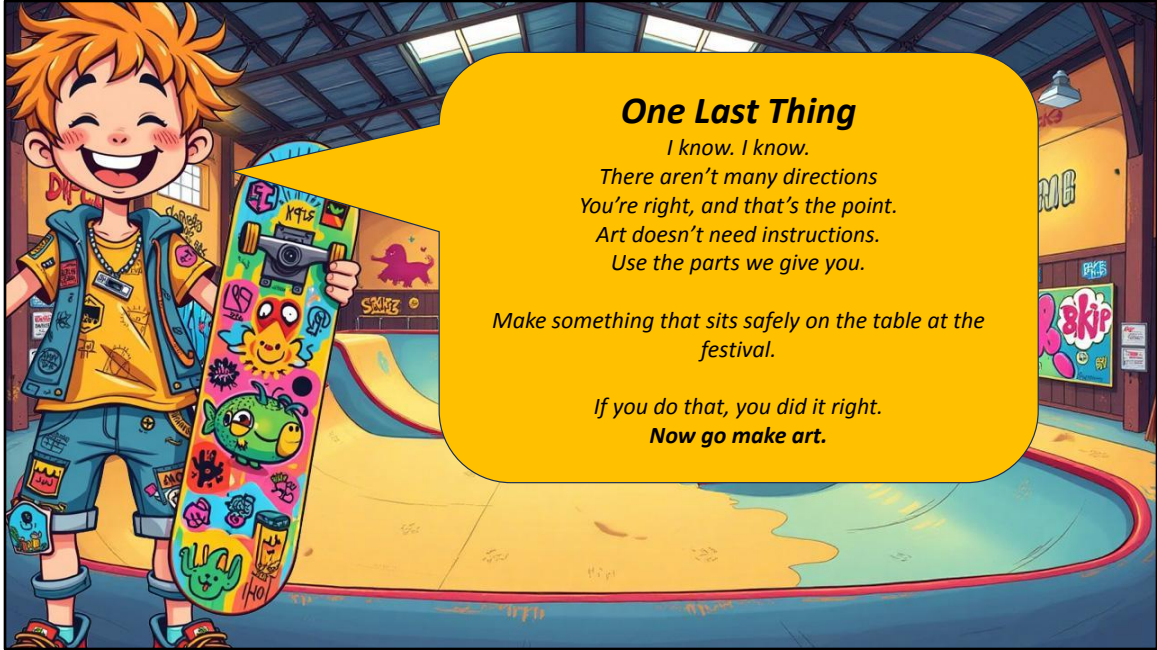
Presentation & Festival Rules

- Students must bring their completed deck to the festival on time
- All pieces must fit safely on the display table
- Students should be ready to share what inspired their design
- All artwork must follow school-appropriate guidelines
- All work must be original and created by the student or team

Spirit of the Challenge

- Be creative
- Be original
- Use the materials you choose
- Create something that represents your own style
- If it uses the provided wooden parts and sits safely on the table, you did it right





One Last Thing

*I know. I know.
There aren't many directions
You're right, and that's the point.
Art doesn't need instructions.
Use the parts we give you.*

*Make something that sits safely on the table at the
festival.*

*If you do that, you did it right.
Now go make art.*

“You’re probably noticing that there aren’t many instructions for this challenge, and you’re right. That’s the point. Art doesn’t need directions. As long as you use the wooden parts we give you and your project can sit safely on the display table at the festival, you’ve already succeeded. Now go make art.”