



“Welcome to the Recycled Art-Bot Challenge. This is a Bring-It event where you create a whimsical robot-themed art piece from recycled materials and bring it to the festival for display.” **Recycled Art-Bot Challenge**

Bring-It Project

LV STEAM League Festival



What This Challenge Is

Create a robot-themed art sculpture
Made primarily from recycled materials
Bring it to the festival for display
Electronics optional

“In this challenge, you will create your own robot-themed art piece using mostly recycled items. It’s completely your design, and on festival day you’ll bring it to be showcased in our student art gallery. If you want to include electronics, you can, but it’s not required.”



Team Size

Teams of **1 to 3 students**

All work must be done only by the students

Adults may not design or build any part

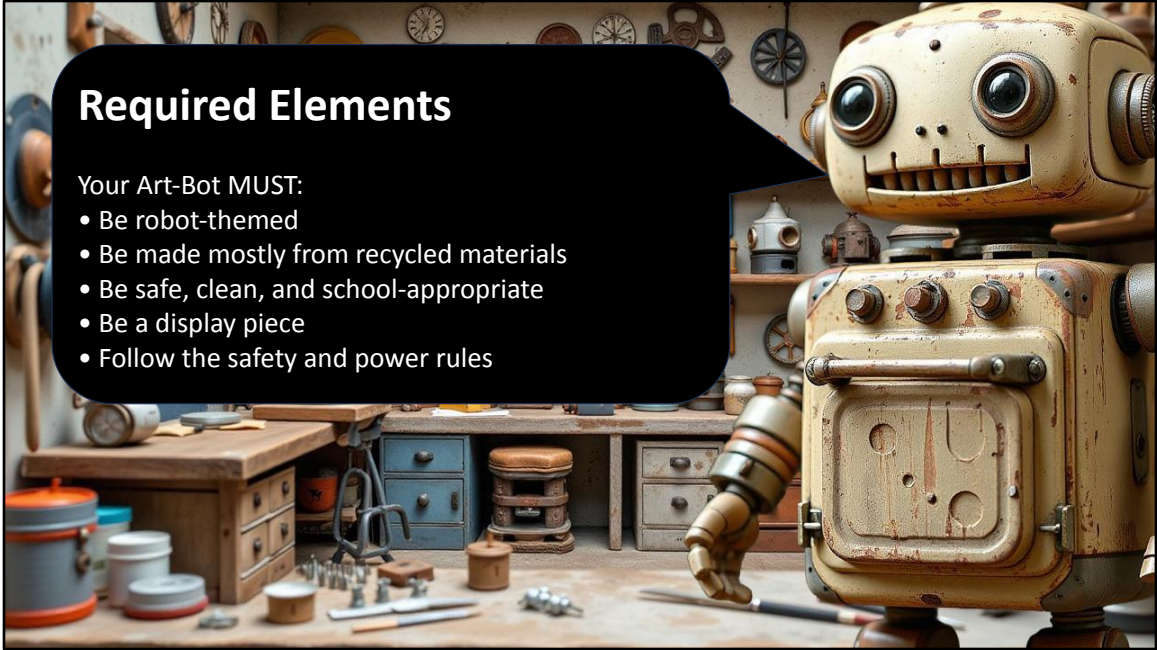
“You may work alone or with up to two teammates. Everything in your project must be created only by students. Adults can cheer for you and support you, but they may not design or build anything.”



What You Will Create

A whimsical robot-themed art piece
Primarily recycled materials
Display-only
Moving parts allowed
Electronics optional

“Your Art-Bot is an art piece. It does not need to function or move on its own. If you want to add a turning head or moving arm, that’s fine. Electronics like LEDs or small motors are optional.”



Required Elements

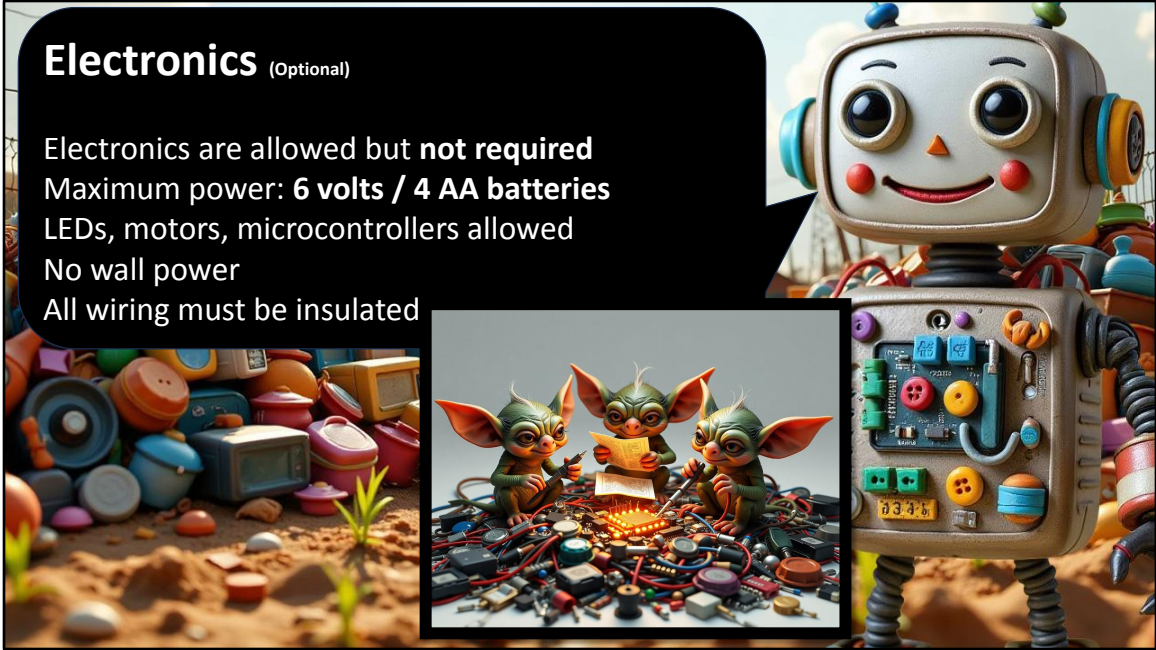
Your Art-Bot MUST:

- Be robot-themed
- Be made mostly from recycled materials
- Be safe, clean, and school-appropriate
- Be a display piece
- Follow the safety and power rules

“There are just a few required elements. It needs to look like a robot, use mostly recycled materials, be a display piece, and follow all safety rules.”

Electronics (Optional)

Electronics are allowed but **not required**
Maximum power: **6 volts / 4 AA batteries**
LEDs, motors, microcontrollers allowed
No wall power
All wiring must be insulated



“You may add electronics if you’d like. The most power you can use is six volts, which is four AA batteries. No wall power and no exposed wiring.”



Recycled Materials

Use safe, clean, recycled materials
No sharp metal
No food containers
No glass
No hazardous materials

NOT allowed:

- Chemicals or solvents
- Pressurized containers
- Flames or heat sources
- Wall-powered electronics
- Sharp or dangerous parts

“Most of your Art-Bot should be built from recycled materials, but they must be clean and safe. No sharp metal, broken glass, food waste, or anything unsafe.”

“To keep everyone safe, hazardous items and wall-powered electronics may not be used. Everything should be safe to touch and handle.”

What This Challenge Is

Create a robot-themed art sculpture
Made primarily from recycled materials
Bring it to the festival for display
Electronics optional



“There is no size or weight limit for this challenge. If your family can get it through the door and place it where it needs to go, it qualifies.”



Timeframe

You have several weeks to build
Work at home or school
Bring your finished Art-Bot to the
festival

“This is a Bring-It challenge, so you have several weeks to create your Art-Bot at home or school. On festival day, just bring it in for display.”



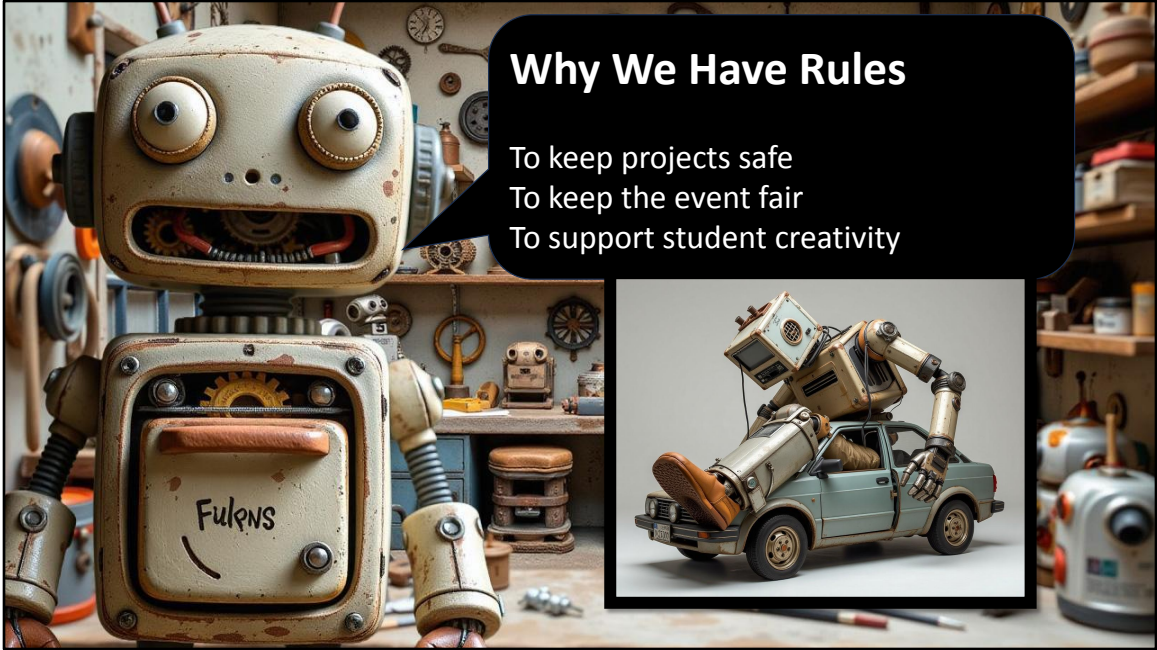
Display at the Festival

Your Art-Bot will be displayed in the Student Creativity Gallery
All visitors will see your work

“At the festival, your Art-Bot will be part of our Student Creativity Gallery. Families, schools, and community members will walk through and see your work on display.”



“This challenge is about creativity and expression. There’s no right way to make a robot art piece. Just make something that feels like you.”

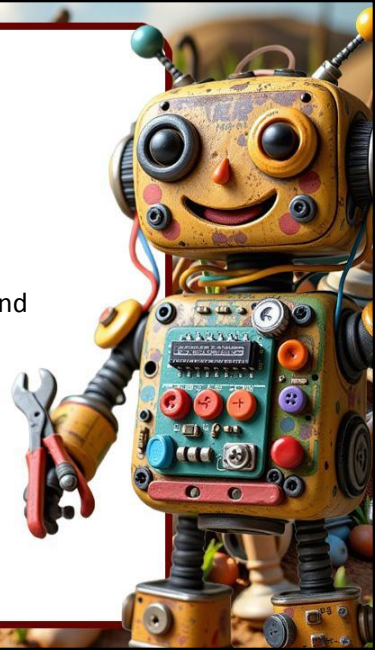


“Our rules aren’t to limit you. They exist so that every project is safe, every student has a fair experience, and you have the freedom to build something truly creative.”

Rules of the Recycled Art-Bot Challenge

Team Rules

- Teams may have **1 to 3 students**
- All work must be created only by the student or team
- No adult designing, building, wiring, or decorating
- All work must be completed during the official challenge window

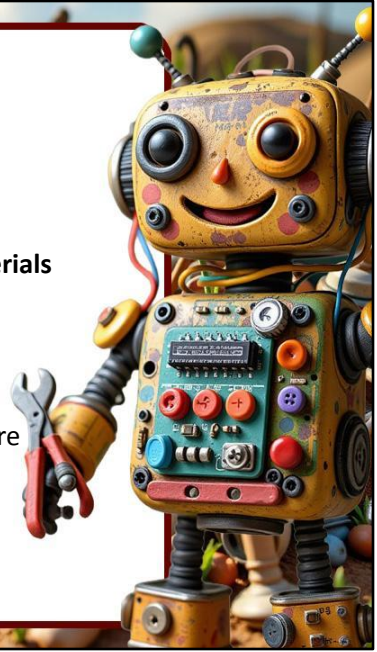


“For this challenge, teams can have one to three students. Everything must be created only by you and your teammates. Adults may not design, build, wire, or decorate any part of your Art-Bot. All work must be done during the official challenge window leading up to the festival.”

Rules of the Recycled Art-Bot Challenge

Materials & Build Rules

- Your Art-Bot must be **robot-themed**
- It must be made **primarily from recycled or repurposed materials**
- You may add safe craft materials for detail and support
- No sharp metal, broken glass, or unsafe parts
- No food waste, unclean containers, or sticky messes
- Art-Bot is a **display piece**, not a functional robot
- Moving parts (arms, head, etc.) are allowed but must be secure

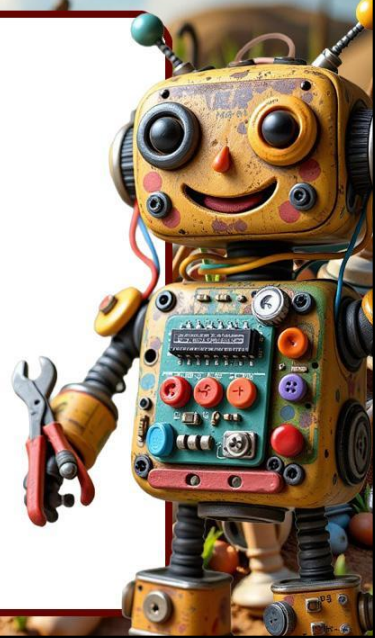


“Your Art-Bot must clearly be a robot-themed art piece and should be made mostly from recycled or repurposed materials. You can add safe craft supplies for details or structure, but the heart of the project is recycled. No sharp metal, broken glass, food waste, or unsafe items. This is a display piece, not a working robot, although moving parts like arms or heads are allowed as long as they’re secure.”

Rules of the Recycled Art-Bot Challenge

Electronics & Power Rules

- Electronics are **optional**, not required
- Maximum power: **6 volts total**
- Up to **4 AA batteries** may be used
- No wall power or extension cords
- No high-voltage parts or dangerous components
- All wiring must be insulated and secure
- No remote control or wireless operation

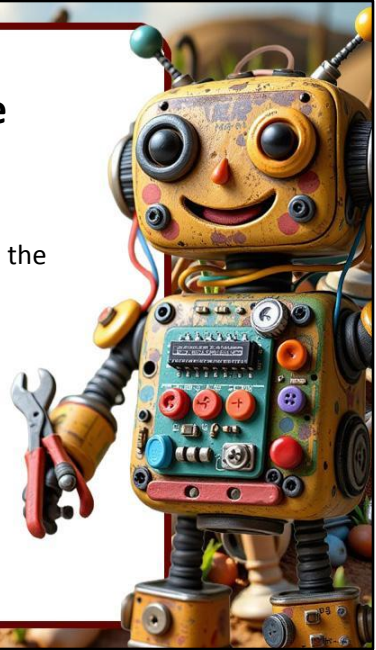


“You may add electronics if you want to, but you don’t have to. If you do, your Art-Bot can use at most six volts of power, which is up to four AA batteries. No wall power or high-voltage parts are allowed. All wiring needs to be insulated and secure, and the robot may not be remote controlled or operated wirelessly.”

Rules of the Recycled Art-Bot Challenge

Size, Safety & Festival Rules

- No strict size or weight limits
- If your family can bring it through the doors and place it in the display area, it's allowed
- Art-Bot must stand or sit safely without staff holding it
- Must be clean, dry, and safe to touch
- Must follow school-appropriate content guidelines
- Bring your completed Art-Bot to the festival on time
- All work must be original and entirely student-made



“There are no strict size or weight limits. If your family can get your Art-Bot through the doors and set it in the display area, it’s allowed. It needs to stand or sit safely on its own, be clean and safe to touch, and follow normal school guidelines. Bring your completed Art-Bot to the festival on time, and remember that all work must be original and entirely student-made.”

One Last Thing

Yes... we know.
There aren't many rules.
And yes... that's the point.
As long as it's robot-themed,
made mostly from recycled materials,
and safe to display...
you did it right.
Now go make art.

